



www.rnpgroup.in



RNP SCAFFOLDING & FORMWORK PVT. LTD

CORPORATE OFFICE Address- Plot A 549/550, Mahape MIDC,
Navi Mumbai 400710, Maharashtra, India
info@rnpgroup.in | sales@rnpgroup.in | www.rnpgroup.in

Mumbai | Pune | Hyderabad | Visakhapatnam



Established in the year 1980 our group has legacy of over 40 years. With our clients and partners, we have one goal; to leave a positive, lasting impact on people and our planet. Our commitment towards quality, expectations has enabled us to achieve zero turnaround and helped us towards continuous innovation. Our vision has been to create a platform with epitome of services that puts customer satisfaction as the core of the business. With over four decades of experience in service industry we are now foraying to develop best-in-class warehousing and logistics infrastructure. With dedicated manpower of over 200 nos. the group has well trained qualified team of engineers to deliver unmatched services.

The scaffolding division of RNP group pioneers itself as one of the largest scaffolding service providers in India. It has its manufacturing and stockyard facilities in Mumbai, Pune, Hyderabad and Vishakhapatnam. With Emphasis on safety and quality this division has been providing services to major petrochemical, infrastructure, pharma and defense sector for the last 44 years. The Aluminium Formwork division has provided best in class services for complex design in the infrastructure sector. The Infracon Division of RNP group has been phenomenal in producing Ready Mix Concrete and allied concrete products with supply to many government and semi government organisations.

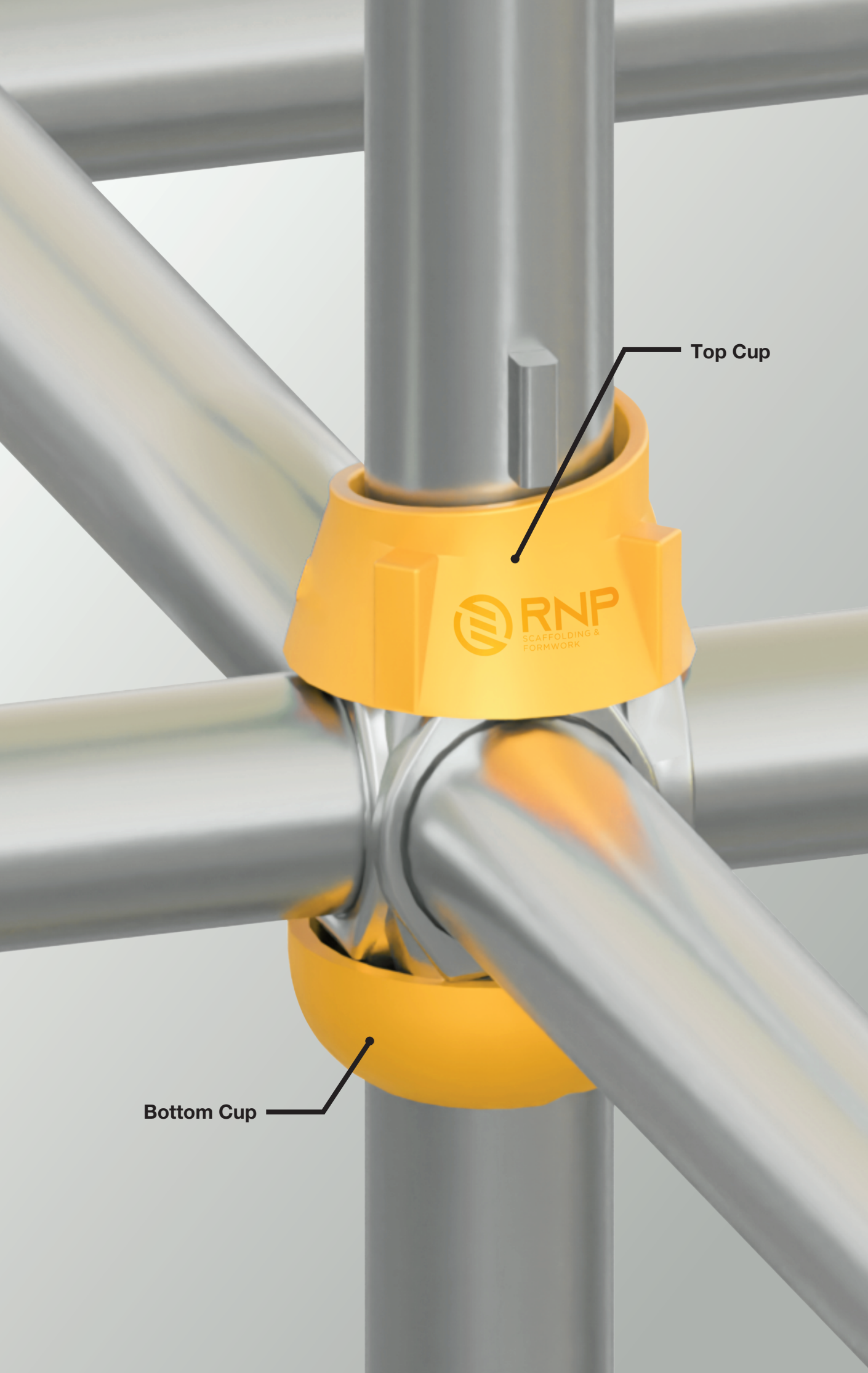
RNP logistics guarantees a never- before- hassle free logistics experience delivered with perfection through world class services, top line solutions & robust infrastructure. RNP logistics Park offers well designed quality warehouse units equipped with fast access loading docks for trucks & clear open space to eaves. Each unit has its own dedicates loading yard with ramp access for forklift & has ample onsite parking. We operate as an integrated logistics service provider delivering excellent, efficient & effective services.





The most dependable
& highest quality constructed
steel tubing sectional
frames in the industry.

Safety Officer



Top Cup

Bottom Cup

CUPLOCK SCAFFOLDING SYSTEM

“ Minimum projection of blades avoids damages in handing and uniform dimension makes the cup joint rigid. ”

Standard Sizes

Vertical	Horizontals
3.0M	2.5M
2.5M	2.0M
2.0M	1.8M
1.5M	1.5M
1.0M	1.2M
0.5M	1.0M
-	0.9M
-	0.8M
-	0.6M

Basic features of Cuplock Standards

Welded Bottom Cups are pressed from high quality steel and captive mobile Top Cups made out of malleable casting provide firm grip to Ledger Blades making the connection rigid and to endure rough site handling.

Verticals are connected end to end by an internal spigot (square or round). This is bolted to lower and upper vertical.

Easiest to erect system having possibilities of connections in four directions at same levels ideal for providing access platforms, besides its versatility for staging and access around any structures. The top cup allows locking and resists sabotage. It can be erected by unskilled labour, easily stored and maintained and can be used in a variety of applications as formwork support, circular access scaffolding, general access scaffoldings, etc

Standard of Vertical

Made out of 40 mm. NB Tubes conforming to I. S. 1161 grade-YST 210/240 or B. S. 1775 grade 40B with provision of cups at the rate of 500 mm c/c. Cuplock Standards manufactured by RNP are of the sizes as mentioned .

Standard of Horizontal

Made out of 40 mm. NB Tubes conforming to I. S. 1161 grade, YST 210/240 or B. S. 1775 with forged blades at the ends

H FRAME SYSTEM

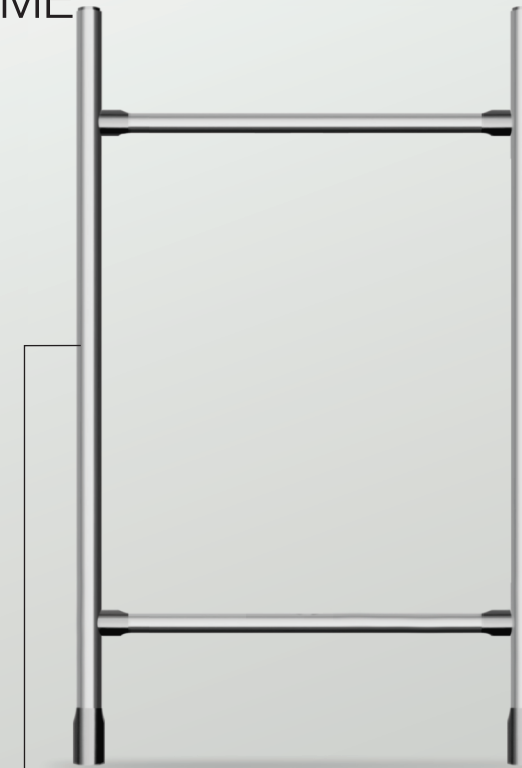


Load Carrying capacity of H Frame :

H Frame	40 B Class
2000mm x 1000mm	2500Kgs.

H Frame With Ladder

H FRAME



CROSS BRACING

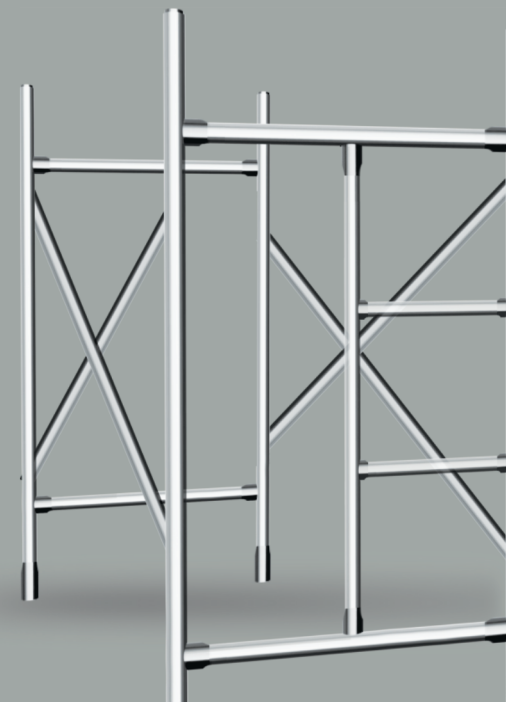
Technical Specifications H Frames :

Vertical Member	48.3mm ODx3mm
Horizontal Member	48.3mm ODx3mm
Socket Member	60.3 mm ODx3 mm

Technical Specifications Cross Bracing :

Cross Bracings	Ms Tube Dia 25mm
Sizes Available	
2.5 Mtr.	2.0 Mtr.

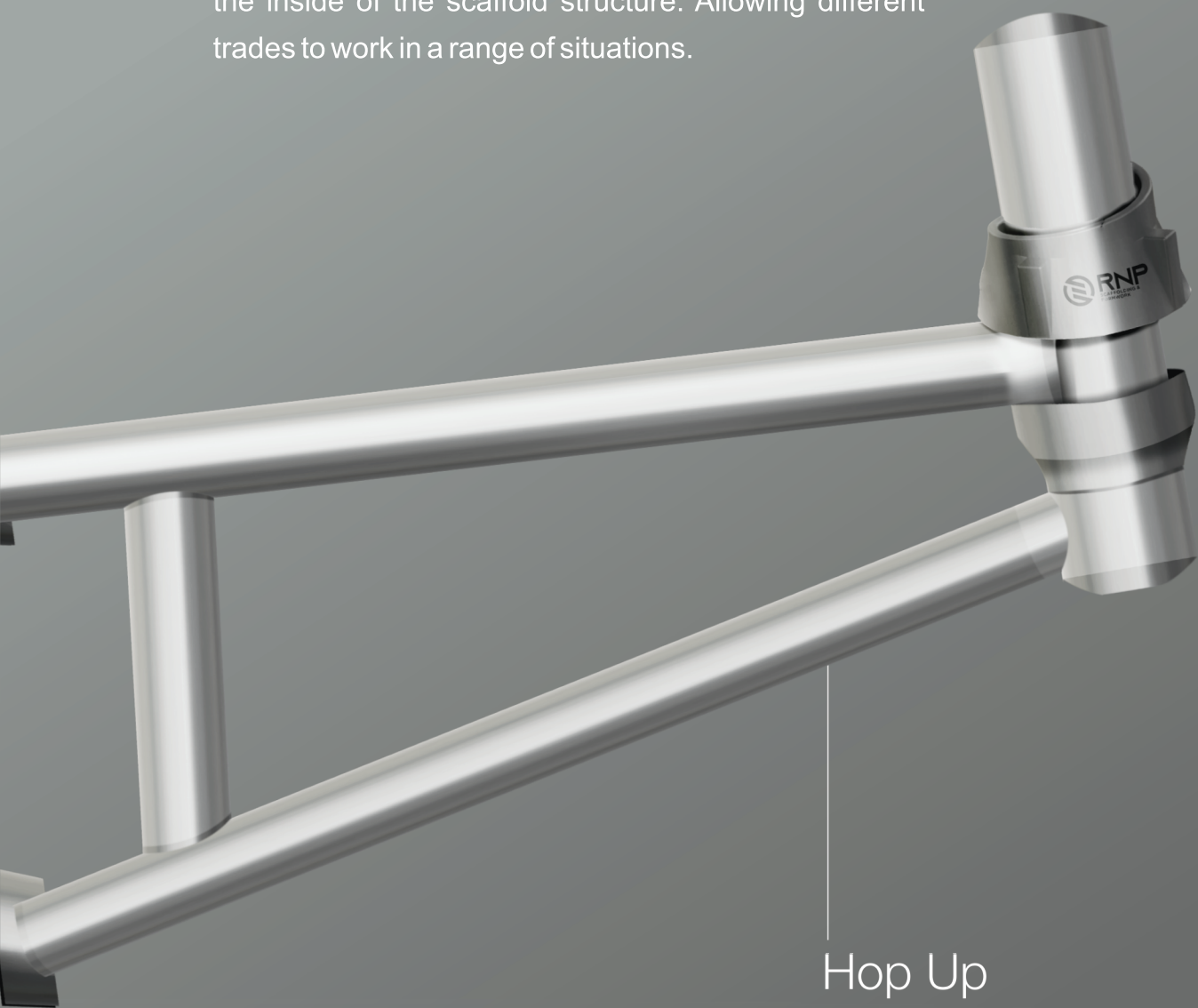
Consists of welded frame of two vertical and two horizontals. The frames are interconnected by scissor cross brace through pins welded on frames and locked in position by spring clips. Bracing in alternate bays/lifts may be skipped depending on height and loading on Scaffolding.



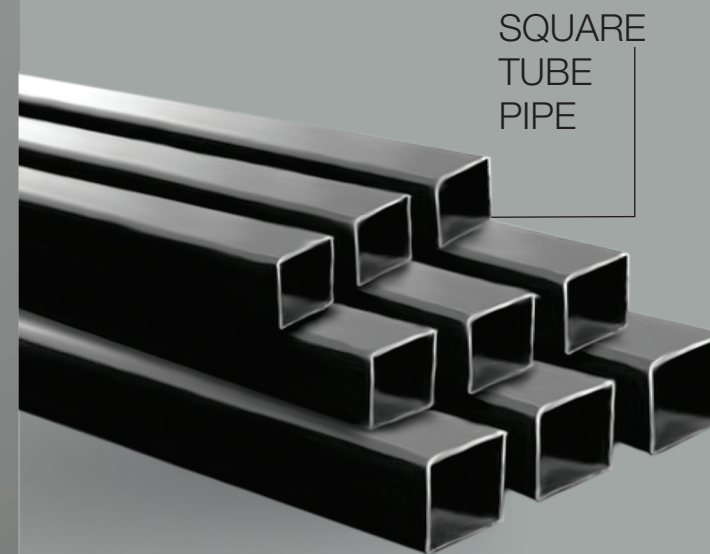
1. Excellent rigidity due to welded construction & cross bracings.
2. No tools required for erection even by unskilled labor and no loose fittings.
3. Ideal as access scaffolding & support staging for heavy structures, high slabs, bridge girders, etc.
4. Excellent as scaffold tower around concrete hoist.
5. No loose parts and individual components, easy for transportation and Storage.
6. Handy, hence easy for erection at great heights.
7. Ideal as access scaffolding or support staging since the system allows any desired spacing of units.
8. Height 2000mm Width 1000mm

HOP UP Bracket

The Hop up Bracket used for Tube and Fitting Scaffolding, sometimes known as a stage bracket or platform bracket is available in two sizes (2 board & 3 board wide) and provides a Scaffold board platform to the inside of the scaffold structure. Allowing different trades to work in a range of situations.



Hop Up Bracket



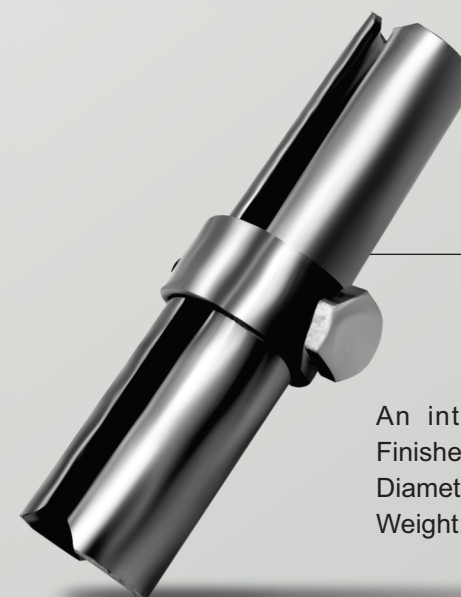
SQUARE TUBE PIPE



PIPE

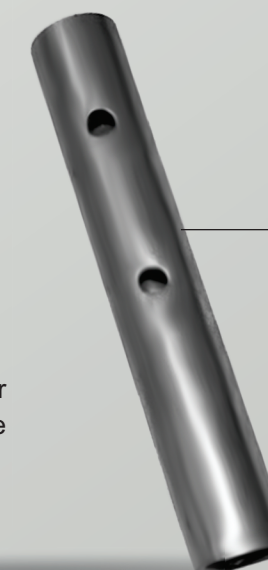
We offer a huge array of pipes and tubes that are manufactured using high quality of steel and alloy. The standard sizes range from 3 ft. Long to 20 ft long that are made out of 48.3 mm OD x 3 mm 40 B Class Pipes.

3Ft. Long, 4Ft. Long, 5Ft. Long, 6Ft. Long, 8Ft. Long, 10Ft. Long, 12Ft. Long, 15Ft. Long, 18Ft. Long, 20Ft. Long.



JOINT PIN

An internal pipe to pipe joiner
Finished in yellow passivate. Tube
Diameter: 38mm
Weight: 0.85 Kg



SPIGOT JOINT PIN

CLAMP SYSTEM

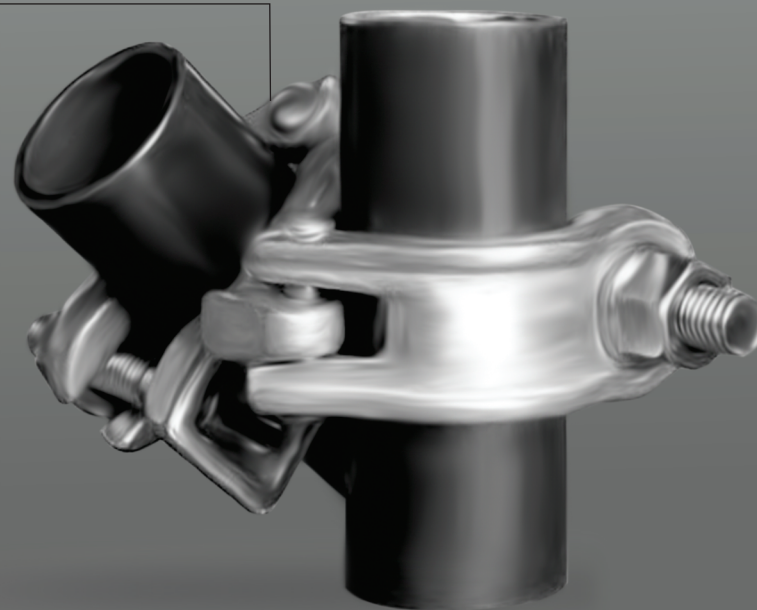


RIGHT ANGLE / FIXED

Used for connection of 2 tubes at any angle
Flange Nut - 1/2" BSW Thread X 23 mm AF,
available Tee Bolts 1/2" BSW Thread, available
in Mild Steel or Boron Steel For 48.3 OD Tube
size, Finish - Zinc Plated Std. Packing - 25
Pcs/Bag.

SWIVEL CLAMP

- Swivel couplers are used for connecting two scaffolds tubes at any angle to each other. These are mainly used for ledger bracings. These are used in less safety load is required.

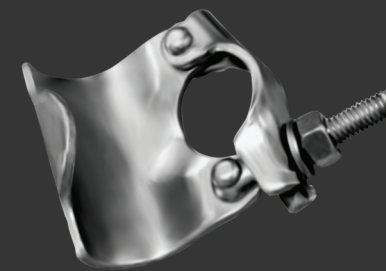


Use for quickly & securely locking the boards in correct position
Nut - 1/2" BSW Thread x 21 mm AF Half Tee Bolts
1/2" BSW Thread, available in Mild Steel or Boron Steel for
48.3mm OD Tube size, Finish - Zinc Plated Std., Packing - 50
Pcs/Bag.

TOE BOARD CLAMP



PUTLOG CLAMP



BEAM CLAMP

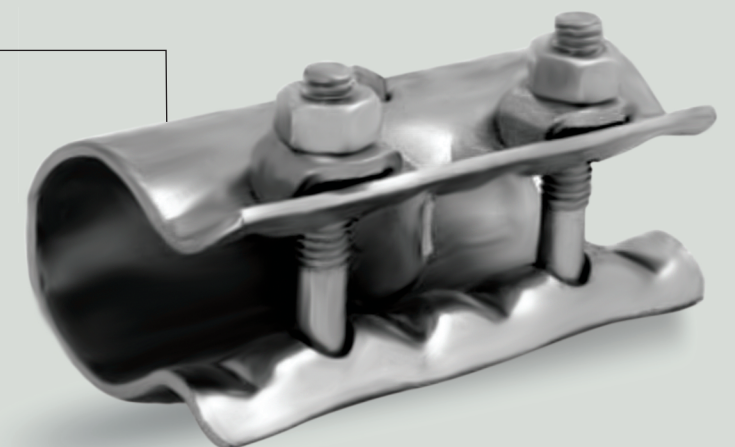


LADDER CLAMP

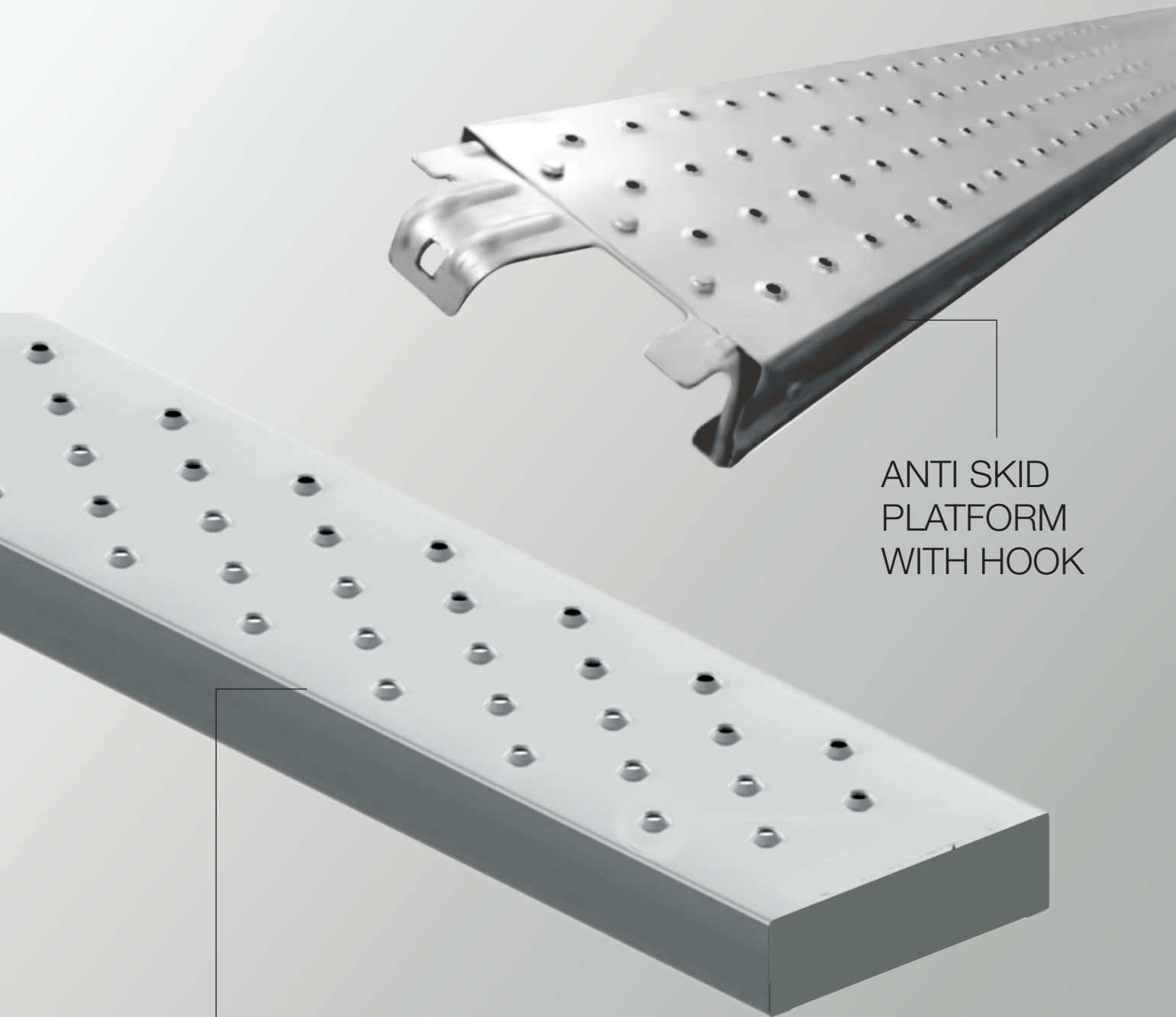


SLEEVE CLAMP

Sleeve Couplers join two scaffold tubes externally end to end. Steel divider centrally ensures equal insertion of each tube. They can be employed where tension joints are required and therefore are particularly useful for long bracing.



PLATFORM



ANTI SKID
PLATFORM
WITH HOOK

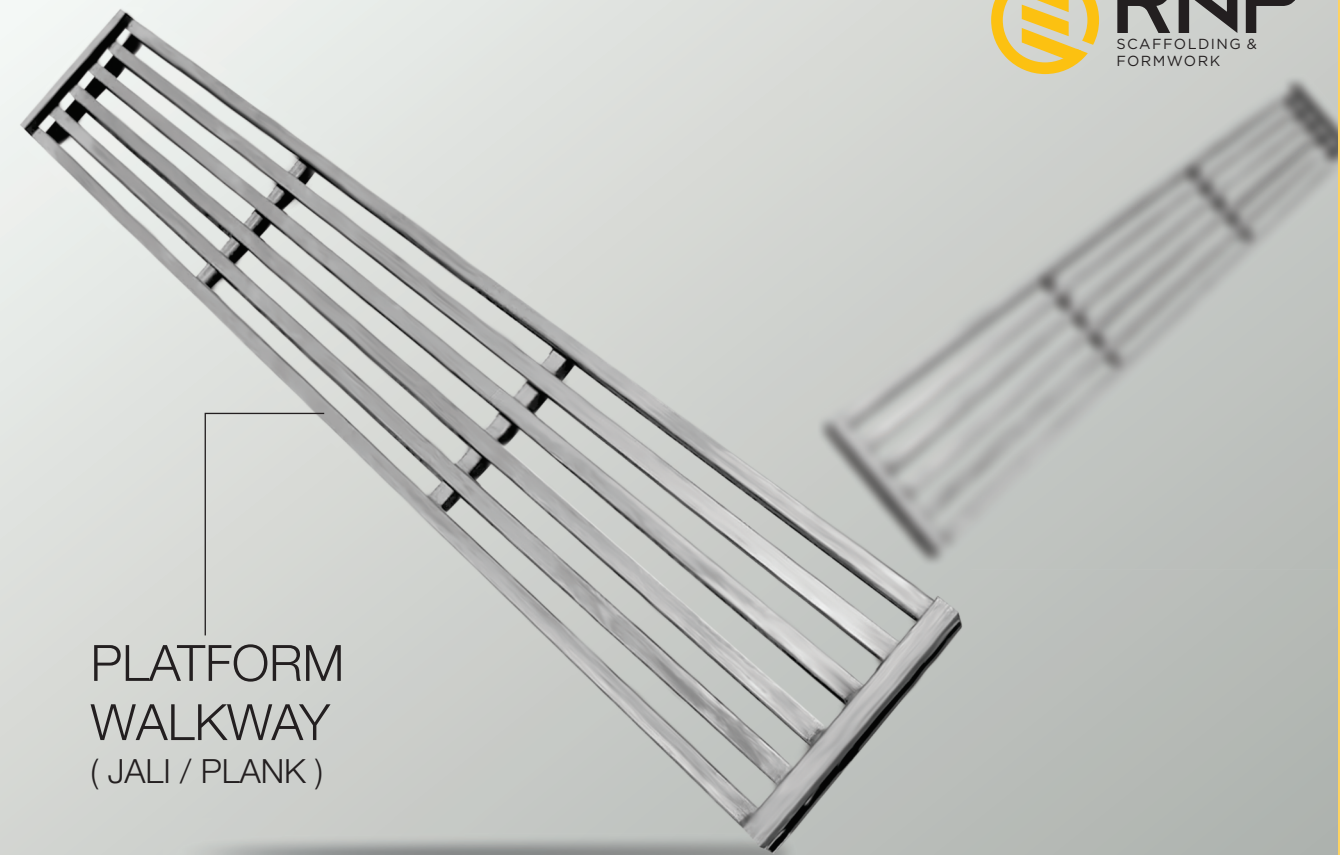
ANTI SKID PLATFORM

We are highly recognizes form engaged in manufacturing and supplying steel plank. Our offered boards are manufactured by using superior quality steel pro cured from trusted vendors with use of latest machine.

Product Details:
Metal Sheet, Thickness 2mm (Approx.)

Sizes Available :

- 2000mm x 285mm x 50mm
- 2100mm x 285mm x 50mm
- 2500mm x 285mm x 50mm
- 3000mm x 235mm x 50mm

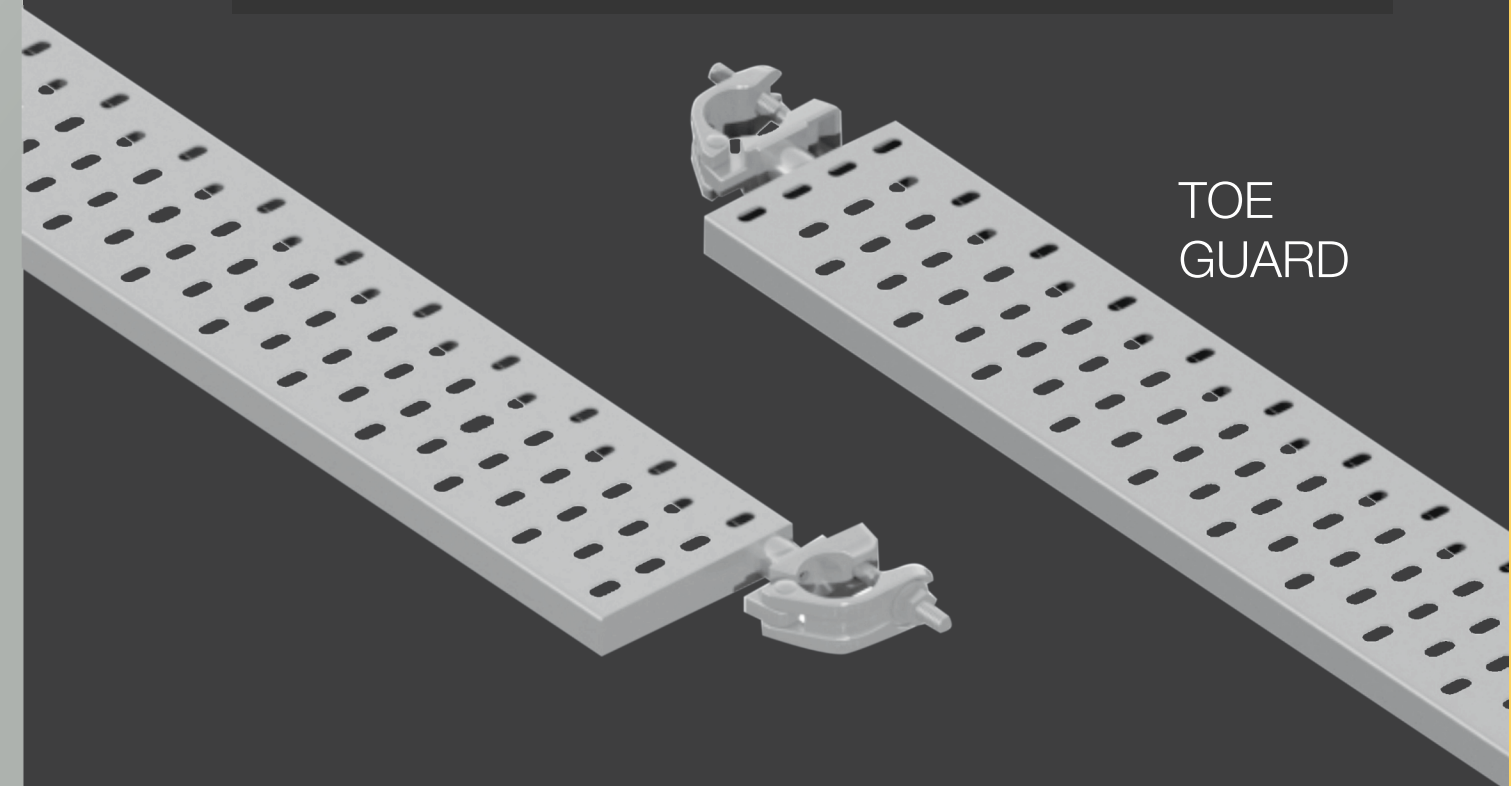


PLATFORM
WALKWAY
(JALI / PLANK)

Scaffolding Walkways / Plank / Jali / Platforms are widely used in new construction, as it speeds up work in high areas by allowing more than one worker on the platform and providing a place to handle materials.

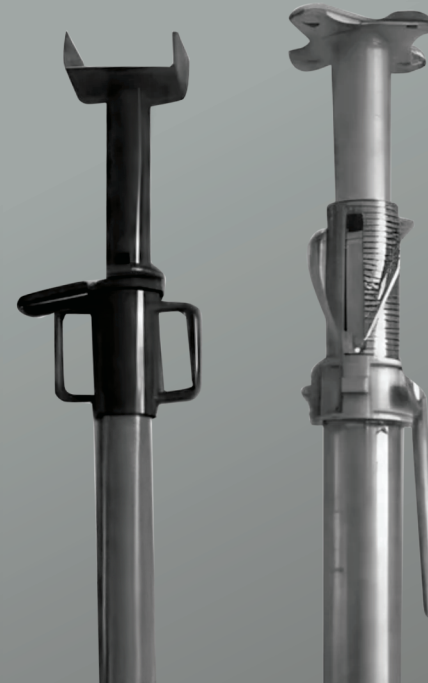
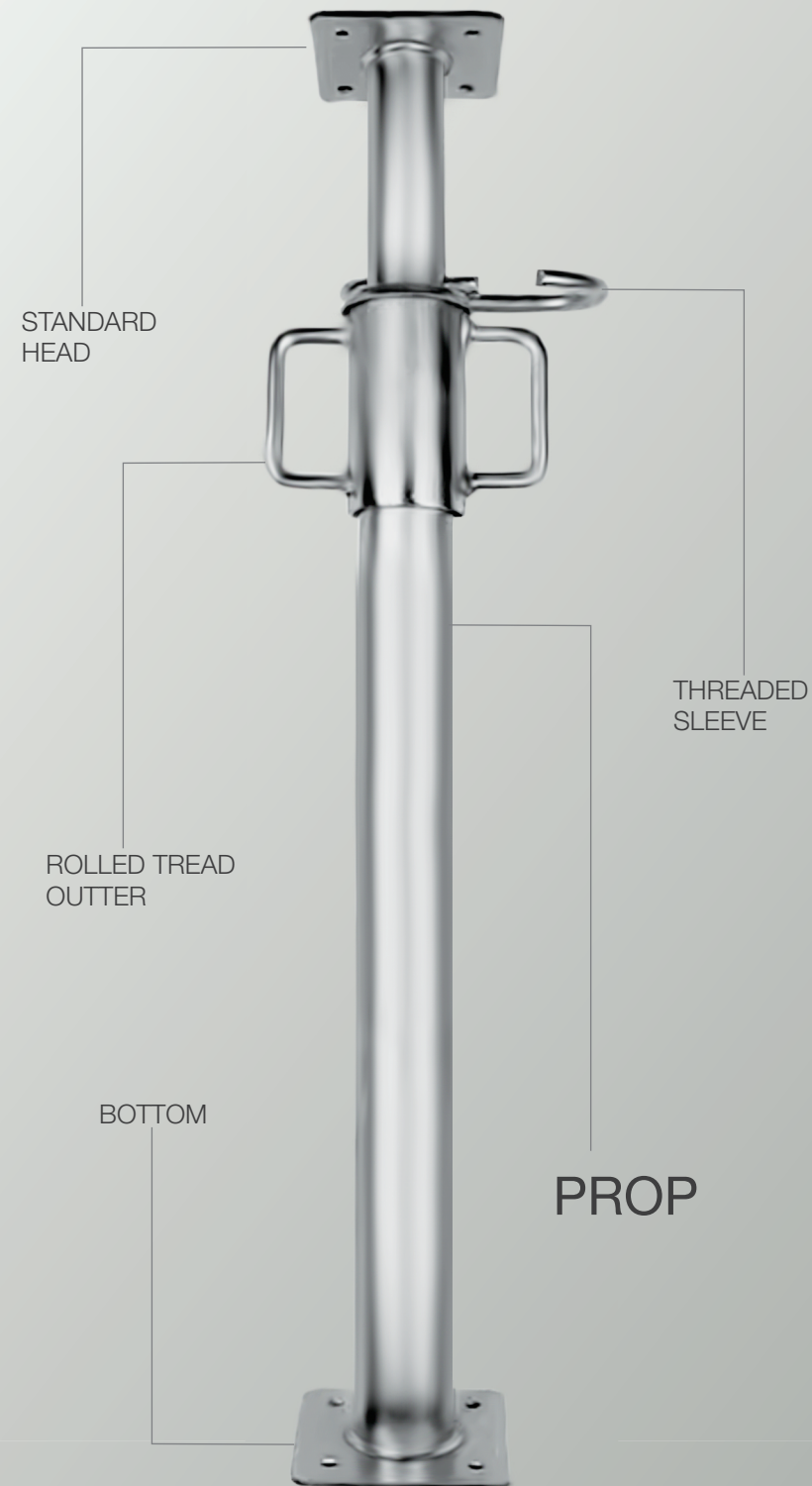
Sizes Available :

- 1.2 Mtr. Long x 0.3 Mtr. Wide
- 1.6 Mtr. Long x 0.3 Mtr. Wide
- 2.5 Mtr. Long x 0.3 Mtr. Wide
- 2.0 Mtr. Long x 0.3 Mtr. Wide



TOE
GUARD

SHUTTRING & ACCESSORIES



PROP

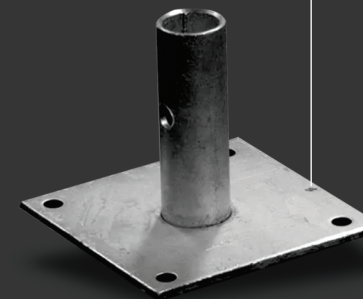
Outer Tube 60.3mm & OD Inner Tube 48.3mm

Below mentioned Loads are arrived by Empirical Calculations. Steel tubes are used for inner outer of Props which are continuously welded and conform to IS 1239/1161, YST 210.

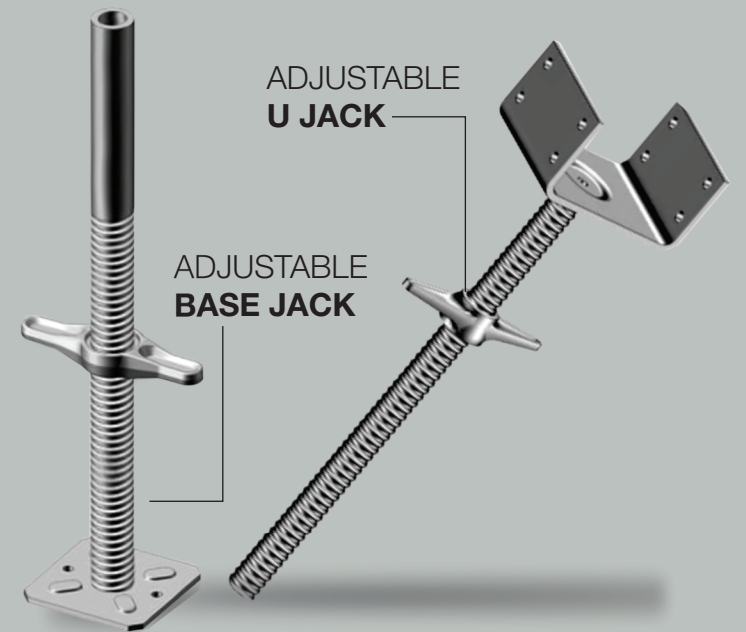
Load Carrying Capacity of Adjustable Steel Props :

Prop	Height (Mtr.)		Safe Axial Load (Kgs.)	
	Closed	Open	Closed	Extended
2Mtr. X 2Mtr.	2.00Mtr.	3.75Mtr.	2900Kgs.	2000Kgs.
2Mtr. X 3Mtr.	3.00Mtr.	4.65Mtr.	2300Kgs.	1150Kgs.

FIXED BASE PLATE



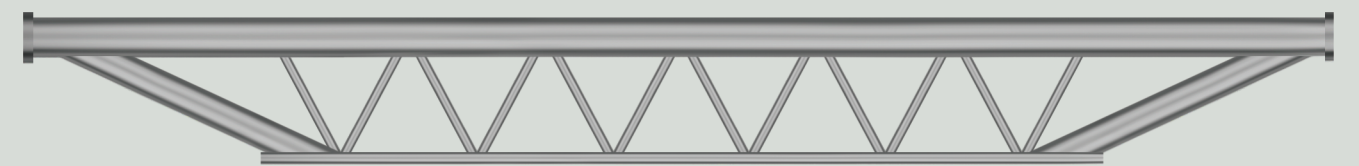
We offer precision engineered range of Base Plates. Our range is acknowledged for sturdy construct, robust performance and durability. Our base plate will work with lightweight support mat boxes and follow focus units. Because of the premium grade raw materials this item is not prone to corrosion as well as wear and tear.



Sizes Available :

- Dia 38mm x 600mm Long
- Dia 38mm x 350mm Long

SPAN



We offer an extensive range of adjustable span that are considered as an integral structural construction scaffolding components of a construction scaffold and provide support to the entire structure.

SHUTTRING & ACCESSORIES



TIE RODS & WING NUT

SHUTTRING PLATES

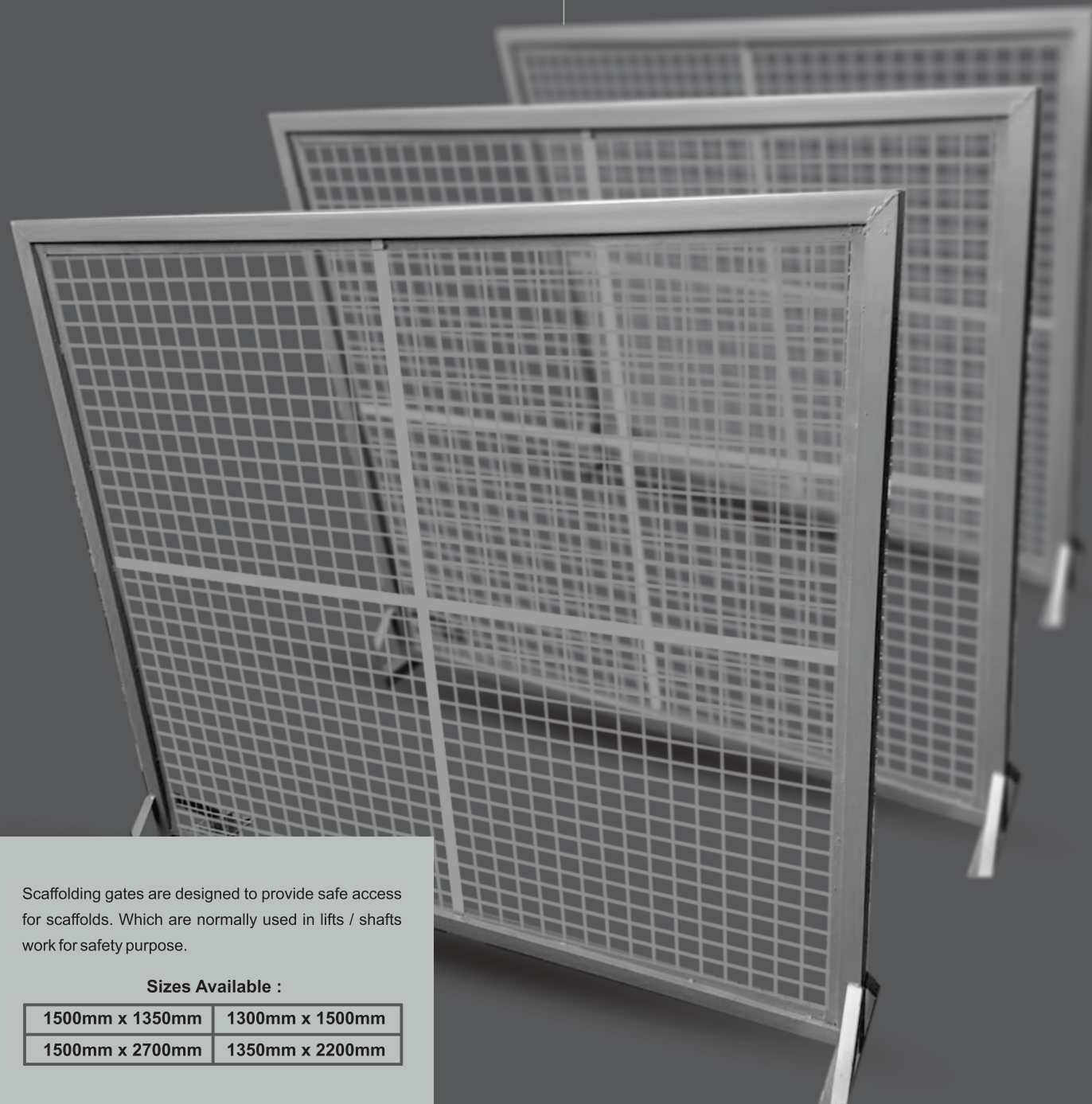
Centering plates and adjuster plates are used to cast floors, beams and laying centering plates respectively during construction of a building. These centering plates are widely used for casting floor, beams etc. Specifications of our centering plates Folded H.R. MS Sheet.

Centering Plates are manufactured from 14/12 gauge M.S.Sheet with pressed flange & stiffeners with proper slots at the edges. Odd dimensions are filled up with the adjuster floor forms / slab form.

Size in mm	Weight in Kgs.
600mm x 900mm	Approx. 15 Kgs.
300mm x 900mm	Approx. 12 Kgs.



SAFETY BARRICADES

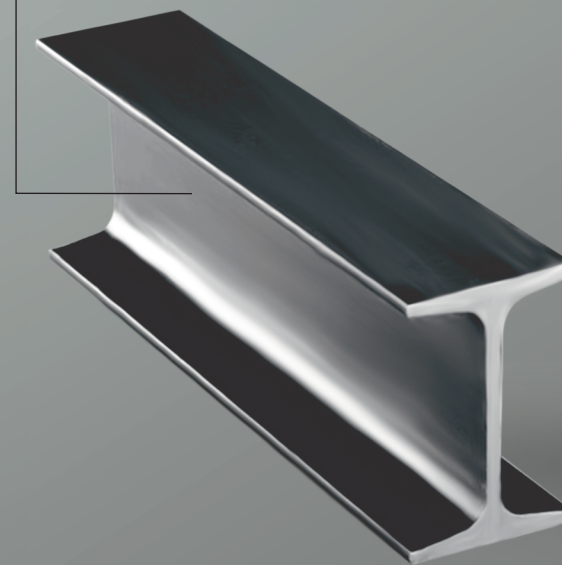


Scaffolding gates are designed to provide safe access for scaffolds. Which are normally used in lifts / shafts work for safety purpose.

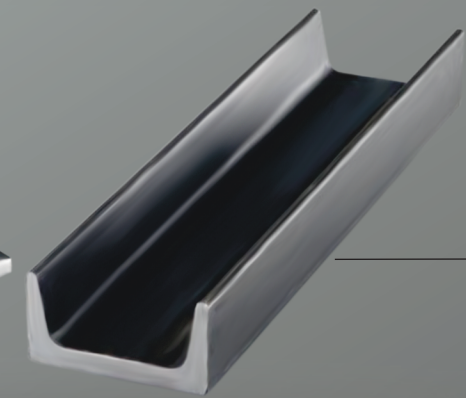
Sizes Available :

1500mm x 1350mm	1300mm x 1500mm
1500mm x 2700mm	1350mm x 2200mm

I- BEAM



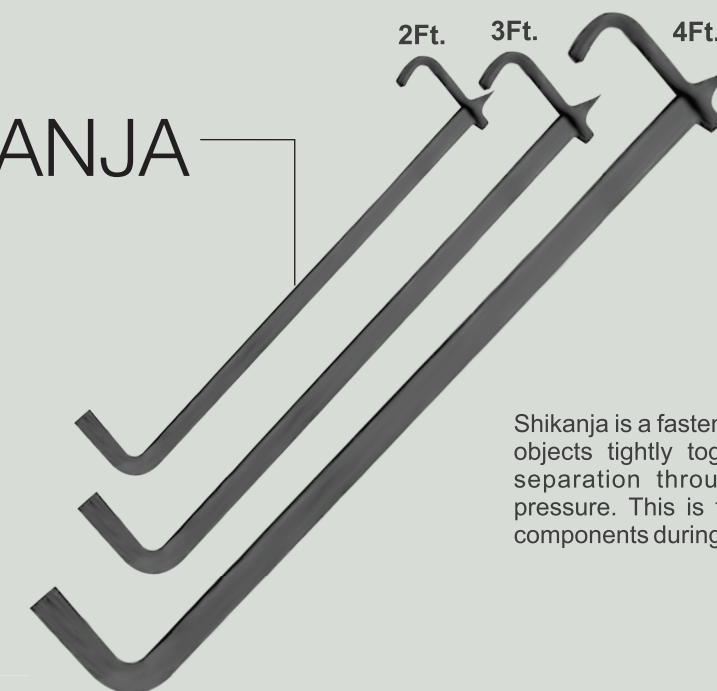
C- CHANNEL



100mm x 50mm
200mm x 75mm, etc.

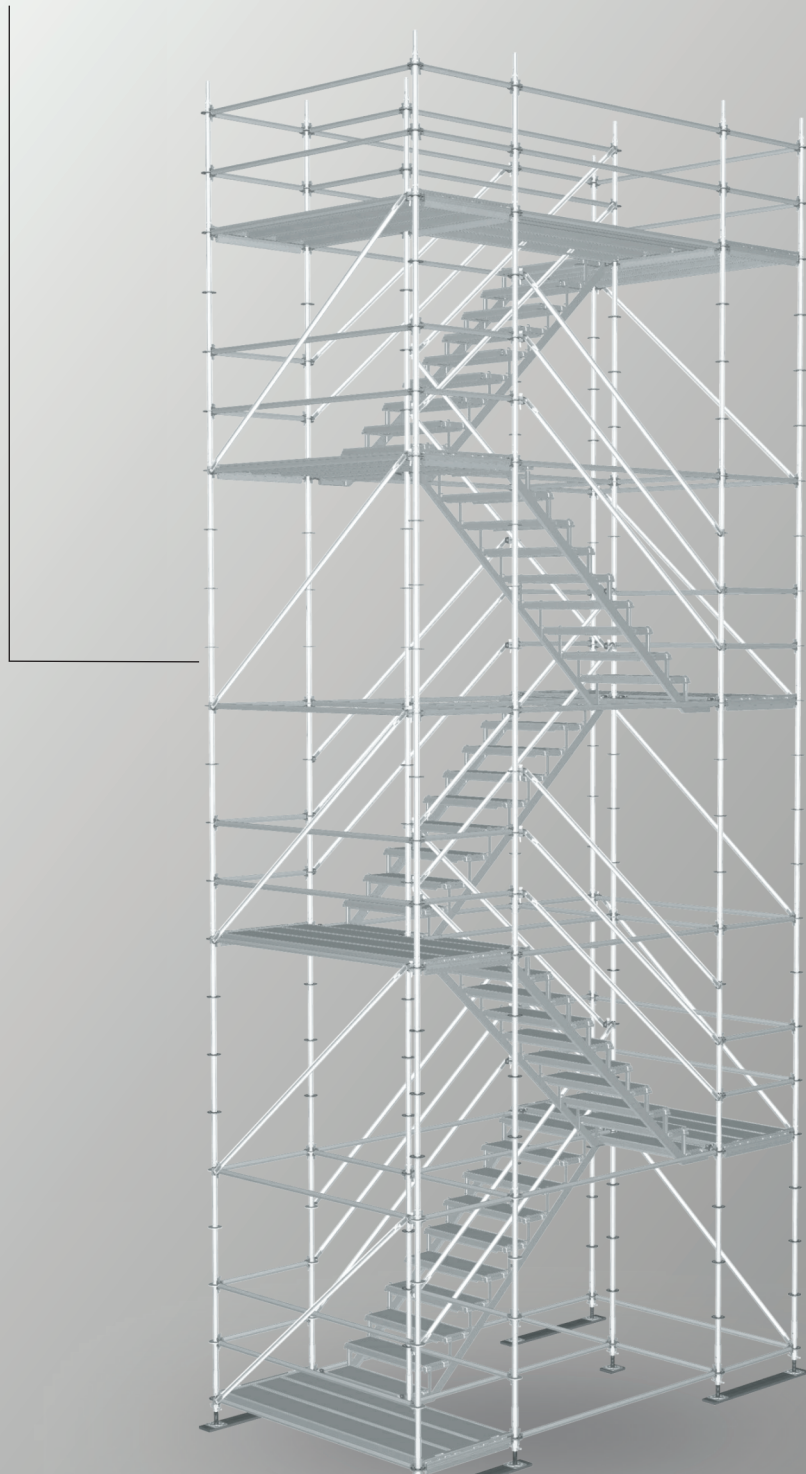
- Horizontal Support like spans, weller used in 100 mm x 50 mm x 6 mm size. It is a high Strength product.
- I Beam (or H beams) are the middle beams of the wall that connect 2 bays together.

SHIKANJA



Shikanja is a fastening device used to hold or secure objects tightly together to prevent movement or separation through the application of inward pressure. This is for temporary use of positioning components during construction and wood working.

STAIR CASE TOWER



The Health and Safety Executive states that ladders are the bottom of the hierarchy of controls and that their use may be justified providing it is not reasonably practicable to use other work equipment which will prevent or mitigate a fall.

To successfully navigate a ladder, workers need certain points of contact at any one time and this is not straightforward when they are ferrying potentially heavy and large objects and trying to grip on the ladder rungs simultaneously.

Sizes / Height Available :
 1.5 Mtr., 3 Mtr., 4.5 Mtr., 6 Mtr.,
 7.5 Mtr., 9 Mtr., 10.5 Mtr.,
 12 Mtr., 13.5 Mtr., 15 Mtr., 16.5 Mtr.,
 18 Mtr. ... Upto 40 Mtr.

ALUMINUM LADDER



CASTER WHEELS



A swivelling wheel secured to the base of a vertical member of the scaffold for the purpose of mobilizing it.

This is safe to use upto 6 Mtr. height scaffolding.

MOVABLE TOWER



When selecting a site stairway, ensure that a double handrail is positioned on both sides that can be automatically adjusted to the correct height to meet the angle of the stairs. All temporary stairways used on-site should conform to EN 12811, which specifies the rise and going, minimum width, acceptable angles and load capacity.

This is Quick and easy to install, site stairways within a matter of minutes can be lifted off transport and secured in place at an angle of between 30 and 55 degrees.

Partnerships



BRANCH



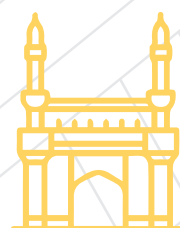
MUMBAI

Address: Survey No. 92 Hissa No.2, Mosare Village, Uran Road, Near Apollo Garage, Manghar Road, Tal. Panvel, Dist. Raigad - 410206, Maharashtra, India
 Email - info@rnpgroup.in | Sales@rnpgroup.in
 Mr. Raju Kedar - 7045452212
 Mr. Deepak Chate - 7045452221

PUNE



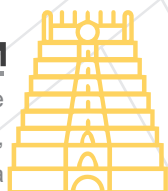
Address: Plot No. 33/3/1, Susnande Road, Near Datt Krupa, Gym off.B.Balaji Indian Oil Petrol Pump, Nande Goan, Tal.Mulshi, Dist-Pune 412115, Maharashtra,India
 Email - info@rnpgroup.in | Sales@rnpgroup.in
 Mr. Raju Kedar - 7045452212
 Mr. Narayan Ramagan - 7722052310



HYDERABAD

Address:Plot No. 117/A/2 to 12 3/A/2, Thondapally Village, Gram Panchayat, shamshabad (M),R.R.Dist, Hyderabad - 509325, Telangana, India
 Email - info@rnpgroup.in | Sales@rnpgroup.in
 Mr. Raju Kedar - 7045452212
 Mr. Taufeeq - 8790911147

VISAKHAPATNAM



Address: Plot No. 12-116/20, Near Employees Revenue layout, Hill Slope, Madhurwada, Visakhapatnam, 530041, A.P. India
 Email - info@rnpgroup.in | Sales@rnpgroup.in
 Mr. Raju Kedar - 7045452212
 Mr. Piku Manna - 8790944311

AWARDS & ACHIEVEMENTS



2018
 Best Channel Partner, service provider for PAN India - CCSIPL



2019
 Certificate of excellence award for most reputed service provider with PAN India presence from Indian Navy & MDL



2021
 Quality Management System -Certificate from DBS CRET



2021-22
 Appreciation Award form GST (Govt of India -Ministry of Finance)



2022
 Best Service Provider Company of the year TATA Projects Ltd

NECESSARY CERTIFICATIONS



ISO 9001:2008



ISO 14001:2015



OHSAS 18001:2007

ENVIRONMENT FRIENDLY TECHNOLOGY

